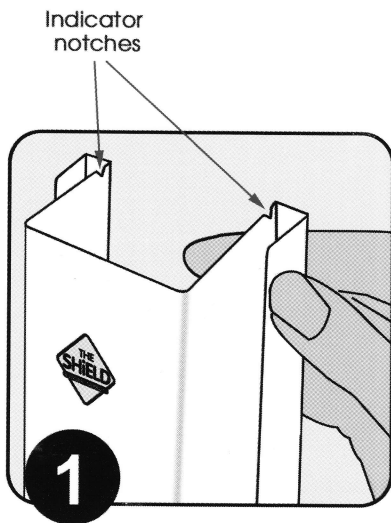


Patent #s 5001862, 6796086

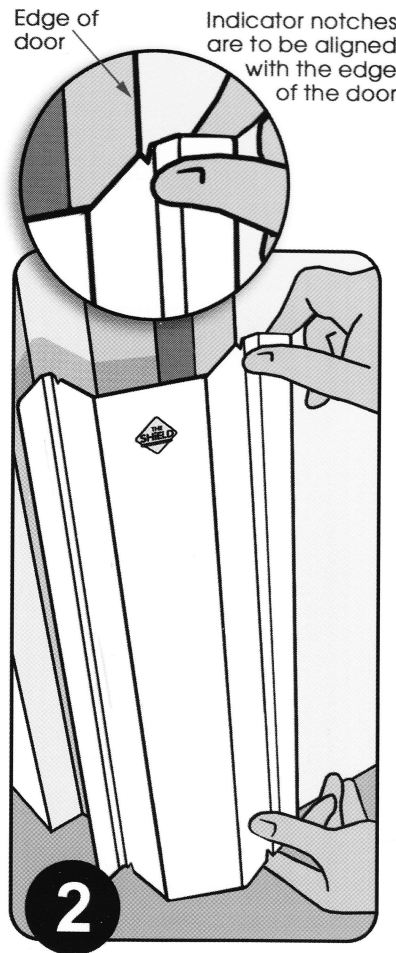


PROTECTS FINGERS FROM GETTING CAUGHT IN THE HINGE SIDE OF DOOR

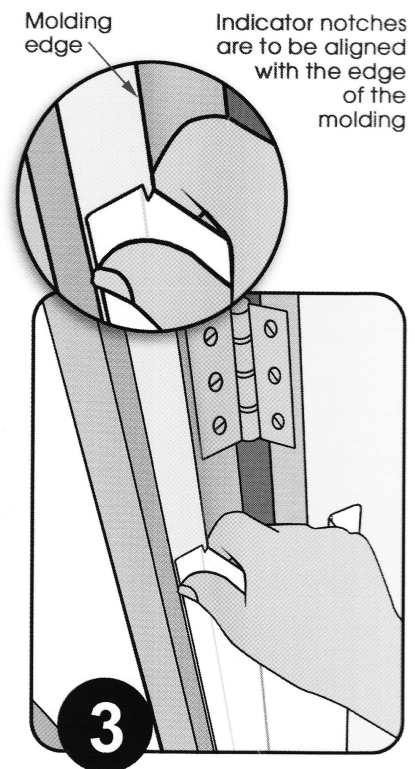
3 EASY STEPS



Unfold "Shield" and locate the notches on the top and bottom. Clean and dry door and molding surface.



WHEN ATTACHING TO DOOR SIDE: Remove tape lining along door side of "Shield". Hold "Shield" on top and bottom and align the notches on this side of the "Shield" with the door edge (see above). Press taped area firmly along the length of the door.



WHEN ATTACHING TO MOLDING SIDE:

Remove tape liner from the other side of the "Shield". With hands on top & bottom, line up the notches with edge of door frame molding (See figure 3). Press firmly to molding.



Child Safety Products
www.TheShield.biz