



CAUTION: This product is only a deterrent. It is not a substitute for proper adult supervision. Discontinue use when child becomes old enough to defeat it.
Test oven lock before each use.

Oven Front Lock

48408

WARNING:

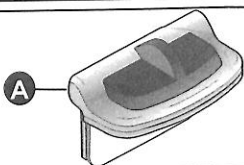
- Maximum oven temperature not to exceed 500°F (260° C) when using the lock. **DO NOT** use the oven's self-cleaning mode while the lock is installed.

Parts List:

- **A** Oven front lock

Tools Needed:

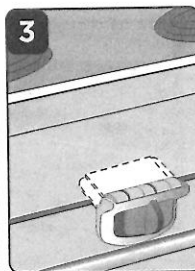
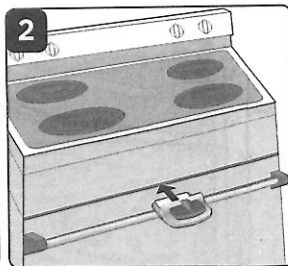
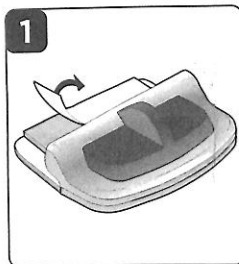
- Measuring tape



To Install

BEFORE YOU BEGIN: Clean all surfaces that the lock will be adhered to, including the top of the oven door and the underside of the oven. Oven lock will not adhere properly if any grease is present.

- 1 Remove paper backing from adhesive (Figure 1).
- 2 Locate the center of oven door. Position lock at center (Figure 2).
- 3 Lift lock up so that adhesive lightly sticks to the top (Figure 3). Then open oven door to adhere lock firmly in position.
- 4 Test lock to be sure it is firmly in place.



Using Oven Lock

TO UNLOCK: Slide lock to the right, and lift hinge up 90°.

TO LOCK: Close oven door. Rotate hinge down in front of oven door. Latch will click into place.

Care and Cleaning

- Wipe clean. Keep free of grease.

Keep These Instructions For Future Use

- Read all instructions before using.
- Remove all contents from packaging and discard box, and/or poly bags.
- Do not return this product to the place of purchase. If any parts are missing, email consumer@djgusa.com, call Consumer Relations at (800) 544-1108, or fax at (800) 207-8182. You can also visit our website at www.safety1st.com. Have the model number ready (48408) and date code (manufacture date) located on package.

©2007 Dorel Juvenile Group.
 All Rights Reserved.
www.djgusa.com
 (800) 544-1108
www.safety1st.com
 Made in CHINA. Fabriqué CHINE. Hecho en CHINA.
 Styles and colors may vary.
 Les styles et les couleurs peuvent varier. Los estilos y los colores pueden variar.
 Distributed by (distribué par) (distribuido por) Dorel Juvenile Group, Inc., 2525 State St., Columbus, IN 47201-7494
 Dorel Distribution Canada, 873 Hodge, St. Laurent, QC H4N 2B1
 07/19/07 4358-5344A